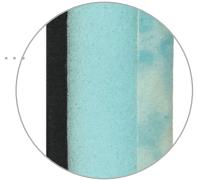


PROFORM BACK

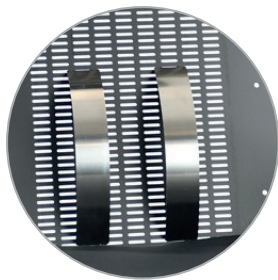
The PC Proform Back features a mild contour that naturally conforms to the user's back, with adjustable lumbar support and multiple attachment points for positioning accessories. This comprehensive support system enhances core stability, upper motor function, and user comfort, promoting independence in daily activities. Its adaptive design makes it an ideal solution for all wheelchair users.



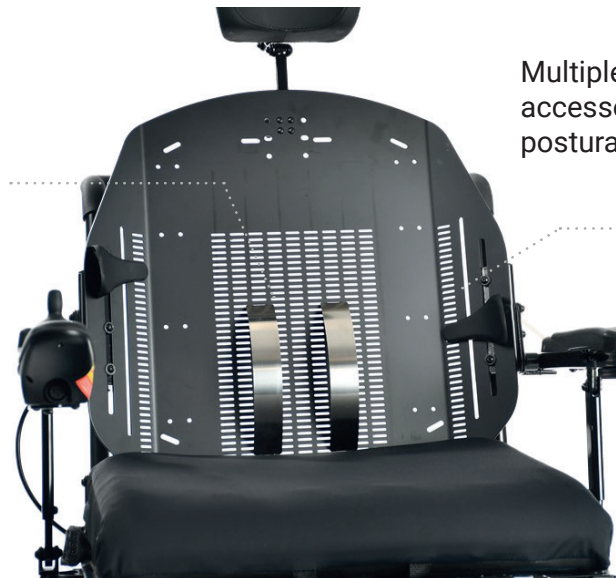
Removable cover for ease of maintenance



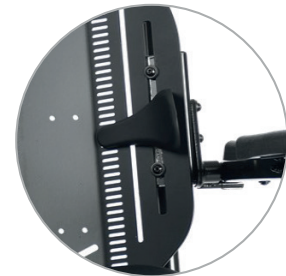
Built-in gel-infused viscoelastic foam to regulate skin temperature for comfort



Adjustable lumbar support to prevent kyphotic/posterior posture



Multiple attachment points for positioning accessories to provide full upper trunk postural support



18" H back has a 7" track, 22"H back has 11" track

HPCPS E2620, E2621

Specification

Backrest Width	Backrest Height	Inserts	Angle Adjustment	Machine Washable	Weight Capacity
16" 18" 20" 22" 24"	18"-24" 22"-28"	Foam, Visco Gel Foam	+/- 15"	180°F and quick to dry	450 lbs